

# Appendix 1.2

## Consultation



## **1.1 Introduction**

Indaver has engaged in statutory pre-application consultations with An Bord Pleanála and has also consulted with the planning authority, statutory bodies, interested parties, and the local community regarding its plans for this development. Details are provided below.

## **1.2 Pre-Application Consultation**

The provisions of section 37A of the Planning and Development Act 2000, as amended (“the 2000 Act”), require an application for permission in respect of the proposed Ringaskiddy Resource Recovery Centre to be made directly to An Bord Pleanála (‘the Board’) under Section 37E, in circumstances where the Board has determined that the proposed development is of a class specified in the Seventh Schedule to the Act and that the condition set out in section 37A (2) of the Act was satisfied.

An Bord Pleanála has notified Indaver and Cork County Council that the proposed Ringaskiddy Resource Recovery Centre is of a class specified in the Seventh Schedule to the Act and falls within one of the paragraphs of section 37A (2). Accordingly, the application for permission is being made to the Board and not to the planning authority. Refer to Appendix 1.1 for a copy of the letter to Indaver from An Bord Pleanála.

The 2000 Act defines that pre-application consultations with the Board shall form part of the process leading to the Board’s determination that an application for permission should be made directly to Board. In compliance with this, and in preparation for submitting the planning application and this Environmental Impact Statement, Indaver engaged in six number pre-application consultation meetings, from the 12th November 2012 to 23rd November 2015.

## **1.3 List of Prescribed Bodies**

An Bord Pleanála has provided a list to Indaver of the bodies, prescribed under Article 213 of the Planning and Development Regulations 2000 (as inserted by Article 41 of the Planning and Development Regulations 2005 (S.I. No. 685 of 2006)), which should be notified of the application by Indaver. The list is provided below. A copy of the planning application and the EIS and NIS has been sent to these prescribed bodies.

- Minister for the Environment, Community and Local Government
- Minister for Arts, Heritage and the Gaeltacht
- Minister for Defence
- Minister for Communications, Energy and Natural Resources
- Cork County Council
- Cork City Council
- Environmental Protection Agency
- Transport Infrastructure Ireland
- Irish Aviation Authority
- An Chomhairle Ealaíon
- An Taisce
- Irish Water
- Fáilte Ireland
- Heritage Council
- Health Service Executive

- Health and Safety Authority
- Minister for Tourism, Transport and Sport
- Southern & Eastern Regional Assembly (formerly South West Regional Authority), and
- Southern Region Waste Management Office

## **1.4 Consultation with Planning Authority (Cork County Council)**

Indaver has engaged with Cork County Council regarding its plans for the Ringaskiddy Resource Recovery Centre. Consultation has been carried out with the following departments:

- Planning Department – meetings, Meath site visit and ongoing consultations since April 2015
- Roads Department – meetings and ongoing consultation since September 2014
- Traffic Department – meetings and ongoing consultation since October 2014
- Architects Department – meetings and ongoing consultation since May 2015
- Coastal Management and Flood Projects Department - Ringaskiddy site visit with project design team in August 2015 - ongoing
- Flood Projects Department - Consultation since January 2015
- Biodiversity Department - meeting and ongoing consultation since May 2015
- Heritage and Archaeology Department – meeting and ongoing consultations since April 2015
- Environment Department - meeting in September 2015

Follow-up consultation was held with technical officers of Cork County Council in 2024 and 2025, in the preparation of this revised EIS. Matters addressed included addressing the recently-completed public realm/ active travel provision in Ringaskiddy, changes to the coastal erosion baseline, and the scope of archaeological reassessment required for the revised EIS.

## **1.5 Consultation with Utilities Providers in Relation to Proposed Service Diversions**

A number of services will require diversion due to the proposed development. Indaver has engaged with all relevant utilities' providers in relation to the proposed diversions. The utilities providers consulted are as follows:

- Gas Networks Ireland
- ESB Networks
- Eir (formerly Eircom)
- Cork County Council (acting on behalf of Irish Water – now Uisce Eireann)

## **1.6 Legal Interest**

### **1.6.1 L2545 Upgrade**

The proposed development includes an upgrade to the L2545 which is a public road. The section of road which Indaver proposes to upgrade lies within its ownership (save for a small section adjacent to the entrance to the Hammond Lane facility which is in the ownership of the Hammond Lane Metal Company Ltd and an access road to Port of Cork lands). Indaver has engaged with Cork County Council, Hammond Lane Metal Company Ltd. and Port of Cork in relation to the proposed upgrade. The relevant parties have provided consent to Indaver to make a planning application for the proposed L2545 upgrade.

### **1.6.2 Cork County Council – Compulsory Purchase Order**

An Bord Pleanála approved the M28 Cork to Ringaskiddy Project Motorway Scheme in 2017, the M28 Cork to Ringaskiddy Protected Road Scheme and the M28 Cork to Ringaskiddy Project Service Area Scheme Compulsory Purchase Order on the 31<sup>st</sup> May 2017 and the scheme (with modifications) became operative on the 28<sup>th</sup> September 2018.

Cork County Council served a Notice to Treat dated 26<sup>th</sup> March 2021 on Indaver to acquire Indaver's interest in the lands.

The lands have been transferred to Cork County Council under a Deed of Transfer dated 14<sup>th</sup> February 2023.

The planning boundary for the proposed development remains the same as outlined in the 2016 EIS. Cork County Council have confirmed that they have no objection to the lands which were subject to the CPO being included in the planning boundary.

A letter from Cork County Council outlining the particulars and terms of the Compulsory Purchase Order is included in Appendix 1.3, along with the Notice to Treat, Land Parcel Schedule and Map.

## **1.7 Grid Connection**

The proposed development also includes for two potential grid connection options:

- Option 1: Loughbeg Substation Option
- Option 2: 110kV Pylon Option

The lands over which the entire grid connection will be constructed lie within Indaver's ownership (save for a small section comprising associated works on the adjacent substation owned by ESB Networks for Option 1 and 10-15m within the existing wayleave of the 110kV power lines). These works will be carried out by ESB Networks and do not form part of the planning application. Indaver has engaged with ESB Networks in relation to the grid connection.

## **1.8 Statutory Bodies and Other Interested Parties**

Indaver has engaged with following bodies regarding its plans for the Ringaskiddy Resource Recovery Centre:

- An Taisce
- Arts Council of Ireland
- Bat Conservation Ireland
- Bird Watch Ireland
- Gas Networks Ireland
- Commission for Energy Regulation
- Commissioner for Irish Lights
- Cork Airport Authority (now DAA)
- Cork County Council (see Section 1.4 above)
- Cork City Council
- Department of Defence
- Department of Agriculture, Food and the Marine
- Department of Arts, Heritage and the Gaeltacht
- Department of Communications, Energy and Natural Resources

- Department of Environment, Community and Local Government
- Department of Transport, Tourism and Sport
- Departments of Communications, Energy and Natural Resources
- Environmental Protection Agency
- ESB Networks
- Open Eir (formerly Eircom)
- EirGrid
- Fáilte Ireland
- Geological Survey of Ireland
- Health and Safety Authority
- Health Service Executive
- Inland Fisheries Ireland
- Irish Aviation Authority
- Irish Raptor Study Group
- Irish Water (now Uisce Eireann)
- Irish Wildlife Trust
- Marine Institute
- National Monuments Service
- National Parks and Wildlife Service
- National Road Design Office
- Office of Public Works
- Port of Cork Company
- The Heritage Council (An Chomhairle Oidhreachta)
- Transport Infrastructure Ireland (formerly National Roads Authority)
- Southern Region Waste Management Office

## 1.9 Community Stakeholder Engagement

In addition to the consultations referred to above, Indaver has consulted the public and the public concerned regarding its plans for the proposed development.

Following initial discussions with representatives of the local Residents Association and other individuals, Indaver proceeded to hold public engagement days in the area for all interested members of the local community.

The first information day was held between 10am and 2pm and between 4pm and 8pm on the 31<sup>st</sup> of July 2015 at the Carrigaline Court Hotel. The second information day was held in the Ringaskiddy Community Centre on the 8<sup>th</sup> of September between 4pm and 8pm. The third information day was held at Shanbally National School on the 15<sup>th</sup> of September between 6pm and 9pm.

Indaver advertised each information day in advance on the Indaver website and in a number of local papers such as The Carrigdhoun, The Southern Star, The Evening Echo and The Examiner. The Ringaskiddy Community Centre and Shanbally National School information days were also advertised on each venue's noticeboards. Indaver sent letters advertising the information days to members of the local community in July and in September. Over 300 letters were sent out on each occasion to individuals who had previously expressed interest in the project, and whose details Indaver had recorded in a communications register.

Members of the project team, including the project manager, the managing director, and the manager of Indaver's Meath facility attended each day.

The project team used a series of posters, and other visual aids to give an overview of the project, the planning history, the legislative and policy context, to demonstrate how the project is complementary to other industry in the area, and how it is compatible with plans for the harbour more widely.

Anyone who attended the information days was invited to come to the Meath facility in order to see what the day-to-day operation of a facility similar to the one proposed in Ringaskiddy. The project team also used a video of the waste treatment process in the Meath facility. The video of the waste treatment process in the Meath facility is on the Indaver website [www.indaver.ie](http://www.indaver.ie)

In addition to inviting people to the information days, Indaver has also been in contact with over 140 groups and individuals to discuss the project. These stakeholders consist mostly of business and community groups. Contact was through briefing letters and emails, over the phone, and through meetings.

Indaver has been engaging with community stakeholders for over six months, since May 2015. Indaver has created a stand-alone website: [www.ringaskiddyrrc.ie](http://www.ringaskiddyrrc.ie) which includes all of the planning application documentation including this EIS, the Natura Impact Statement (NIS), and planning drawings etc.

Copies of an advert, letters to the local community, and an information leaflet giving an overview of the project are provided in **Section 1.11** below.



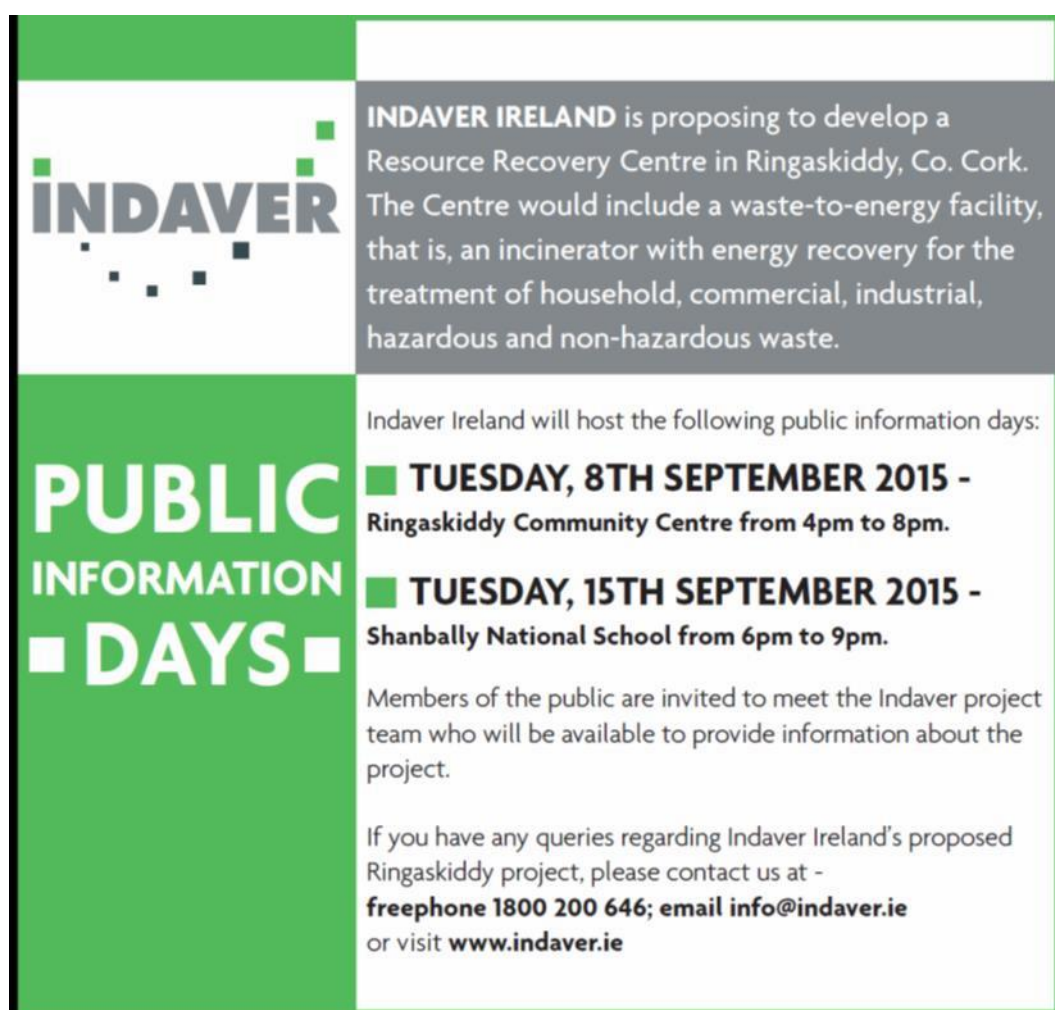
**Figure 1 Indaver Ireland's MD giving an overview of the project**

## 1.10 Other Consultees

- Cork TDs, Members of Seanad, MEPs
- Political parties
- Local and national business groups
- Ringaskiddy corporate neighbours
- National and local environmental groups
- Local and national media
- Local community groups in Ringaskiddy, Monkstown, Shanbally, Crosshaven, Curraghbinny, Carrigaline

## 1.11 Information Material

Copies of the advert from Irish Examiner (Figure 2), sample letters to the local community (Figure 3 & 4), posters (Figure 5) and an information leaflet (Figure 6) giving an overview of the project are provided below.



The image is a public information poster for Indaver Ireland. It features a green and white color scheme. On the left, the Indaver logo is displayed above the text 'PUBLIC INFORMATION DAYS' in large, bold, white letters on a green background. To the right, a grey box contains the text: 'INDAVER IRELAND is proposing to develop a Resource Recovery Centre in Ringaskiddy, Co. Cork. The Centre would include a waste-to-energy facility, that is, an incinerator with energy recovery for the treatment of household, commercial, industrial, hazardous and non-hazardous waste.' Below this, a white box lists two public information days: 'TUESDAY, 8TH SEPTEMBER 2015 - Ringaskiddy Community Centre from 4pm to 8pm.' and 'TUESDAY, 15TH SEPTEMBER 2015 - Shanbally National School from 6pm to 9pm.' At the bottom, it states: 'Members of the public are invited to meet the Indaver project team who will be available to provide information about the project. If you have any queries regarding Indaver Ireland's proposed Ringaskiddy project, please contact us at - freephone 1800 200 646; email info@indaver.ie or visit www.indaver.ie'

Figure 2 Advert in Irish Examiner September 4<sup>th</sup>, 2015



XXXXXXXXXX  
Address Line 1  
Address Line 2  
Address Line 3

3<sup>rd</sup> September 2015

Dear XXXXX

We are preparing a planning application to develop a resource recovery centre in Ringaskiddy. This centre would include a waste-to-energy facility, that is, an incinerator with energy recovery for the treatment of household, commercial, industrial, hazardous and non-hazardous waste.

With this in mind, we are extending an invitation to attend one of our information days over the coming weeks. There will be one at the Ringaskiddy Community Centre on the 8<sup>th</sup> of September between 4pm and 8pm, and there will be one at Shanbally National School on the 15<sup>th</sup> of September between 6pm and 9pm.

We would also like to offer an open invitation to visit our waste-to-energy facility in Duleek, Co. Meath.

Please feel free to contact us if there are any queries regarding our proposed centre in Ringaskiddy, or if you would like this name and address to be removed from our register. We can be contacted by email [info@indaver.ie](mailto:info@indaver.ie), Freephone 1800 200 646, or Freepost Indaver Ireland, 4th Floor, Block 1, West Pier Business Campus, Freepost F5127, Dun Laoghaire, Co. Dublin.

Yours sincerely,

John Ahern  
Managing Director, Indaver Ireland

Indaver Ireland Ltd. • Reg. No. 25657  
Registered Office: 4th Floor, Block 1, West Pier Business Campus, Old Gurneary Road, Dun Laoghaire, CO. DUBLIN, D18 4ND • tel. + 353 1 280 4534 • fax + 353 1 280 7865  
• Toka Quay Road, Dublin Port, DUBLIN 1, IRELAND • tel. + 353 1 280 4537 • fax + 353 1 280 7855  
• Unit 11, South Ring Business Park, Kinsale Road, CO. DUBLIN, IRELAND • tel. + 353 21 470 4760 • fax + 353 21 470 4250  
• Mech Waste-to-Energy Facility, Carranscree, Duleek, CO. MEATH, IRELAND • tel. + 353 1 280 5331 • fax + 353 1 280 7865  
VAT Reg. No. IE9670712 • IBAN IE53 48 9334 0633 1252 49 • AIBK152D  
Directors: J. Ahern, C. Jones, J. Keane  
Belgian Directors: R. De Bruyckere, M. Deconinck, B. Goemans



Figure 3 Sample letter to the local community September 2015



XXXXXX  
XXXXX  
Ringaskiddy  
Cork

28<sup>th</sup> July 2015

Dear XXXXX,

We are writing this letter to you as you had previously expressed interest in receiving updates on Indaver Ireland's proposed development in Ringaskiddy, Co. Cork. The purpose of this letter is to provide a project update, and to verify if there is still an interest in remaining on this contact list.

We are preparing a planning application to develop a Resource Recovery Centre. This Centre would include a waste-to-energy facility, that is, an incinerator with energy recovery for the treatment of household, commercial, industrial, hazardous and non-hazardous waste.

With this in mind, we are extending an invitation to attend one of our information sessions at the Carrigaline Hotel on Friday 31<sup>st</sup> July from 10am to 2pm or from 4pm to 8pm. Details of future information sessions will be advertised in local newspapers and on our website [www.indaver.ie](http://www.indaver.ie).

We would also like to offer you an open invitation to visit our waste-to-energy facility in Duleek, Co. Meath.

Please feel free to contact us if you have any queries regarding our proposed centre in Ringaskiddy, or if you would like this name and address to be removed from our register. We can be contacted by email [info@indaver.ie](mailto:info@indaver.ie), Freephone 1800 200 646, or Freepost Indaver Ireland, 4th Floor, Block 1, West Pier Business Campus, Freepost F5127, Dun Laoghaire, Co. Dublin.

Yours sincerely,



John Ahern  
Managing Director, Indaver Ireland

Indaver Ireland Ltd. • Registered in Ireland No. 35557  
Registered Office: 4th Floor, Block 1, West Pier Business Campus, Old Dunlany Road, Dun Laoghaire, CO. DUBLIN, IRELAND • Tel: +353 1 280 4534 • Fax: +353 1 280 7865  
• Tolk Quay Road, Dublin Port, DUBLIN 1, IRELAND • Tel: +353 1 280 4537 • Fax: +353 1 280 7855  
• Unit 11, South Ringbusiness Park, Enniscorthy Road, CORK, IRELAND • Tel: +353 21 470 6266 • Fax: +353 21 473 4259  
• Vasey Waste-to-Energy Facility, Carrigrohane, Duleek, CO. MEATH, IRELAND • Tel: +353 1 280 7531 • Fax: +353 1 280 7885  
VAT Reg. No. IE9767127 • IBAN IE34 9X 9334 0633 1250 49 • ABBIE20  
Directors: Ahern, C. Jones, J. Keaney  
Belgian Directors: R. De Baetselier, H. Decorte, B. Goemoeis



Figure 4 Sample letter to the local community July 2015

# RINGASKIDDY RESOURCE RECOVERY CENTRE

■ Providing energy from waste via incineration



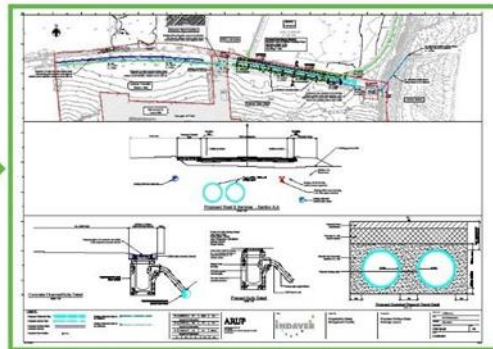
**Figure 5 Poster**

# PROPOSALS FOR RINGASKIDDY RESOURCE RECOVERY CENTRE

■ Providing energy from waste via incineration



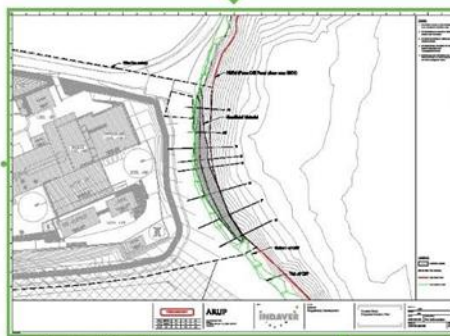
Artist Impression, Ringaskiddy Resource Recovery Centre



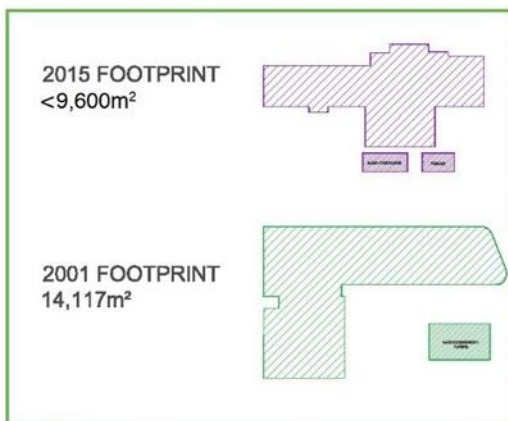
Road Upgrade Proposal



Artist Impression, Scale of Stack



Beach Nourishment Proposal



Beach Nourishment Proposal - Before



Beach Nourishment Proposal - After

Figure 5b Poster

# INDAVER WASTE TO ENERGY FACILITY

■ Providing energy from waste via incineration



Meath Waste to Energy Facility



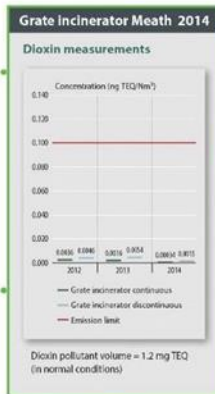
Weighbridge



Reception Hall



Visitor Centre



Control Room



Electricity Substation



Community Gain



Alternative Option, Landfill



Alternative Option, Export

Figure 5c Poster

## What is resource recovery and why is it important?

Indaver proposes to build a resource recovery facility in Ringaskiddy.

Resource recovery plays a vital role in moving towards a circular economy in which waste is recognised as a valuable resource from which materials and energy can be recovered. Where a linear economy is wasteful and unsustainable, a circular economy is sustainable and efficient.

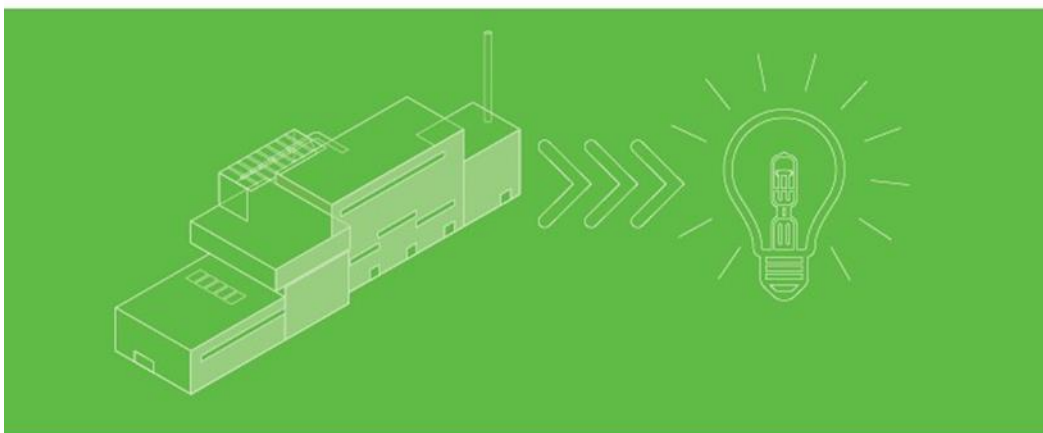
We need to move from a linear economy to a circular economy because we are currently living beyond our environmental means. Policy at European and national levels is creating this transition. The European Parliament and the Council of the European Union describe this vision for 2050 in the *7th Environmental Action Programme*:

**In 2050, we live well, within the planet's ecological limits. Our prosperity and healthy environment stem from an innovative, circular economy where nothing is wasted and where natural resources are managed sustainably, and biodiversity is protected, valued and restored in ways that enhance our society's resilience. Our low-carbon growth has long been decoupled from resource use, setting the pace for a safe and sustainable global society.**

On a national level, Ireland's Regional Waste Plans apply the principles of the circular economy. The strategic vision of the Southern Region Waste Management Plan, published in May 2015, is to rethink the southern region's approach to managing waste. The Plan re-defines waste streams as valuable material resources to be recovered and recirculated, rather than merely disposed of.

This paradigm shift will lead both to a healthier environment and to sustainable commercial opportunities for our economy. Resource recovery plays a vital part in creating a circular economy that is the foundation for prosperity and health.

The proposed Ringaskiddy Resource Recovery Centre would support European, national, and regional circular economy objectives by diverting valuable non-recyclable resources from landfill and from export for use by other European member states. The Centre would safely and efficiently recover valuable energy which could be used locally. Thermal recovery also supports high quality recycling by treating polluted and complex waste, thereby keeping harmful substances out of the circular economy. Finally, thermal recovery facilities can contribute to recycling through extraction of ferrous and non-ferrous metals and where possible, a range of aggregates, all from bottom ash.



Page 1

Figure 6a Information Leaflet

## Has Indaver built and managed anything like the Ringaskiddy Resource Recovery Centre in Ireland?

Indaver built, and now operates, Ireland's first waste-to-energy facility for the treatment of household, commercial and industrial, hazardous and non-hazardous waste in Co. Meath. The Meath Waste-to-Energy Facility completed its fourth successful year of operation in August 2015. It treats 235,000 tonnes per year of residual waste and generates more than 18MW electricity from this waste, enough to power the equivalent of more than 22,000 households.



Meath Waste-to-Energy Facility



Reception Hall



Control Room



Electricity Substation

Page 2

Figure 6b Information Leaflet

## What is the Ringaskiddy Resource Recovery Centre?

Indaver proposes to develop a resource recovery centre in Ringaskiddy in County Cork for the treatment of household, commercial and industrial, hazardous and non-hazardous waste. The proposed development, the Ringaskiddy Resource Recovery Centre, will include a waste-to-energy facility. The facility will use robust and proven technology to process up to 240,000 tonnes per annum of residual waste. Energy and other useful materials will be recovered from this residual waste, which is currently landfilled or exported. The waste-to-energy facility will produce approximately 21 megawatts of electricity.

The site for the Ringaskiddy Resource Recovery Centre is situated at the north-eastern corner of the Ringaskiddy peninsula and occupies an area of approximately 12 hectares.

### Design

The facility has been designed to fit in with the area's corporate campus feel.



### Scale

The stack height is relatively low in comparison to other developments in the locality.



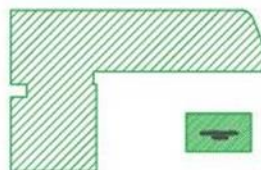
### Footprint

The footprint for this plan has been reduced in comparison with previous plans.

**2015 FOOTPRINT**  
**<9,600m<sup>2</sup>**



**2001 FOOTPRINT**  
**14,117m<sup>2</sup>**



Page 3

Figure 6c Information Leaflet

## What is Indaver's planning history in Ringaskiddy?

<b>2004 planning</b>	An Bord Pleanála granted planning permission for a waste-to-energy plant for hazardous and non-hazardous industrial and commercial waste, a waste transfer station for industrial waste, and a community recycling park for household recyclable waste.
<b>2005 licencing</b>	The Environmental Protection Agency granted an operating licence for a waste-to-energy plant for hazardous and non-hazardous industrial and commercial waste, a waste transfer station for industrial waste, and a community recycling park for household recyclable waste.
<b>2008 planning</b>	<p>An Bord Pleanála recommended granting planning permission for a waste-to-energy plant for hazardous and non-hazardous industrial and commercial waste and a transfer station.</p> <p>However, Indaver had also requested planning permission for a municipal facility. The Board stated that a municipal facility was not needed at that time as it was not part of waste management planning for the County. Indaver did not amend its proposal, because it would not have been economically viable to do so, therefore the Board refused the entire application.</p>

Page 4

Figure 6d Information Leaflet

## What is different about this application?

**In 2008, a municipal facility was not part of waste management planning for County Cork. Now, in 2015, waste management policy has changed. The Regional Waste Management Plans and the National Hazardous Waste Management Plan identify a need for 300,000 tonnes of additional municipal thermal capacity and an additional 50,000 tonnes of hazardous thermal capacity in Ireland.**

### Policy

The Southern Waste Region Management Plan notes that the spatial distribution of thermal recovery facilities nationally is potentially unbalanced, with all active and pending facilities located in the Eastern and Midlands Region. As a result, the Plan notes that there is a need to consider the spatial distribution of thermal recovery capacity in the State when authorising future facilities. In order to bring balance to the spatial distribution of facilities, Indaver will seek planning permission for a waste-to-energy facility to treat municipal, commercial and industrial, hazardous and non hazardous waste in Ringaskiddy, Co. Cork.

Three other reasons for objection to the 2008 plan pertained to the zoning of the site, local flooding of the road, and erosion of the local coastline. The 2015 planning application has been prepared with consideration of all of these objections.

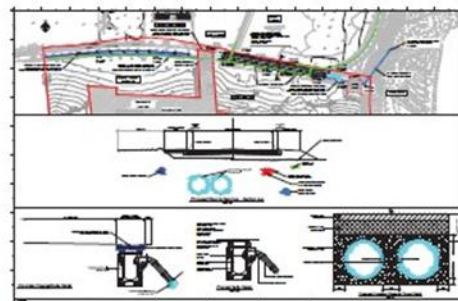
### Zoning

Indaver's proposed site in Ringaskiddy is now a zoned 'Industrial Area'. As per the Cork County Development Plan, consideration will be given to large scale waste treatment facilities including waste-to-energy recovery facilities in 'Industrial Areas'. This area is also home to a large cluster of pharmaceutical companies, many of whom are existing customers of Indaver. Being located in close proximity to our customers reduces the distance that the waste needs to be transported, thus reducing the carbon footprint of waste management. This Centre would provide local solutions for local waste.

This area is also designated as a Strategic Employment Area as outlined in the County Development Plan. The Ringaskiddy Resource Recovery Centre would support the local economy and provide opportunities for both direct and indirect local employment.

### Road Upgrade

Included in the proposed development is an upgrade of the local road (L2545) adjacent to the Indaver site in order to alleviate local flooding issues along the road. This upgrade would improve access to not only to the Indaver site, but also to the other institutions in the area, and to Haulbowline. The upgrade includes landscaping, and so would improve the appearance of the approach to Haulbowline.



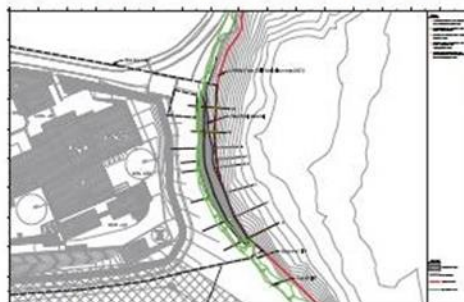
Technical drawing of the road upgrade.

Page 5

Figure 6e Information Leaflet

## Beach Nourishment

In addition, the proposed development will include beach nourishment along the eastern boundary of the Indaver site. Indaver would deposit shingle on the emerged beach above the foreshore. This form of beach nourishment is preferred, as it mimics natural processes while being un-invasive; a similar strategy has been used on Greystones Beach in Dublin. The shingle dissipates wave energy, so it would protect the toe and lower area of the cliffs from direct wave action, thus reducing the rate of erosion. The shingle would protect the Indaver site and those adjoining it, so would benefit the entire coastline. It would also enhance the visual appearance of the beach.



Beach nourishment technical drawing

## Education and research

As the owner of Ireland's first waste-to-energy facility, Indaver understands and values education. Since the opening of the Meath facility in 2011, we have welcomed more than 2,000 visitors onsite. Visitors, who come from a range of different countries, include third-level students, local authorities, industry groups, energy bodies, and waste-to-energy operators.



Tour of Facility

Figure 6f Information Leaflet

### Leading the field in learning & research in Ringaskiddy.

In addition to recovering resources from waste, the Ringaskiddy Resource Recovery Centre would be a centre for learning and research. Like the Meath facility, the Ringaskiddy facility would have a dedicated Visitor Centre in order to accommodate visitors to the site. The Visitor Centre would provide a gateway to the site, showcasing best practice in resource recovery management and sustainability.

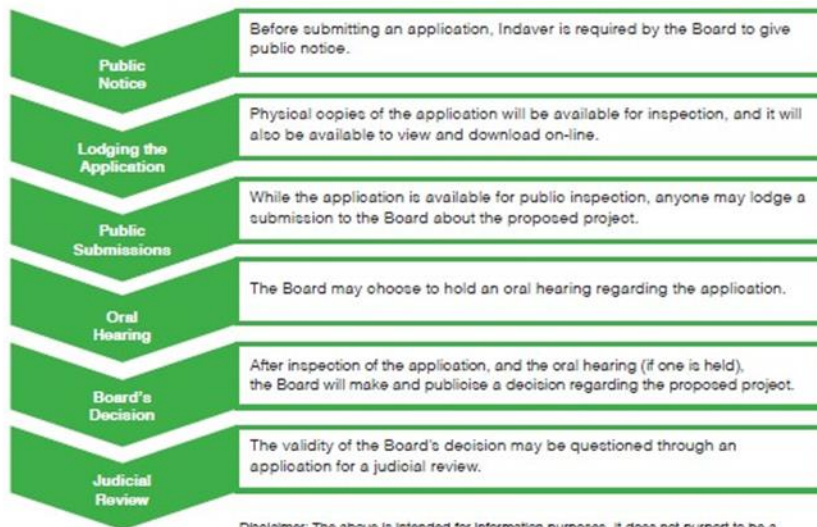
The Ringaskiddy Resource Recovery Centre would also include a high-tech, multi-media training facility. Using our training centre model, we would provide courses for industrial customers in areas such as Dangerous Goods, Transport Safety & Legislation, Waste Legislation and Packaging of Waste. With a high-tech laboratory on site, we could also provide training in the analysis of waste composition. There is a local emphasis on research in Ringaskiddy, which will provide an excellent opportunity for Indaver to develop existing research partnerships with University College Cork and to develop new partnerships with neighbouring institutions. The particular cluster of industries in Ringaskiddy provides the ideal environment to foster research in renewable energies.



Visitor Room

Figure 6g Information Leaflet

## What are the next steps?



**Disclaimer:** The above is intended for information purposes. It does not purport to be a legally binding interpretation of the relevant provisions and it would be advisable for persons contemplating legal action to seek legal advice.

The information provided here is taken from the Board's "Guide to Public Participation in Strategic Infrastructure Development". The guide, with extensive information about the application process, can be found at <http://www.pleanala.ie/sid/sidpp.htm>

### More information about Indaver.

The Indaver Group is an international player in Europe, with facilities and operations in Belgium, Germany, Ireland, Portugal and the Netherlands. Each year, Indaver manages more than 5 million tonnes of waste, the majority of which is either recovered as energy or recycled. From this waste, Indaver produces enough energy from the thermal treatment of waste to supply power for around 240,000 households per year. Having been in business in Ireland for more than more than thirty years, Indaver's trademark is delivering high quality, cost effective services in the municipal, industrial and specialist waste market across Ireland.

Please feel free to contact us if you have any queries regarding our proposed centre in Ringaskiddy.

**Email:** [info@indaver.ie](mailto:info@indaver.ie),

**Freephone:** 1800 200 646

**Freepost:** Indaver Ireland, 4th Floor, Block 1, West Pier Business Campus, Freeport F5127, Dun Laoghaire, Co. Dublin.

**Website:** <http://www.indaver.ie>

September 2015

Page 8

Figure 6h Information Leaflet